

Investor Information

(As of March 31, 2011)

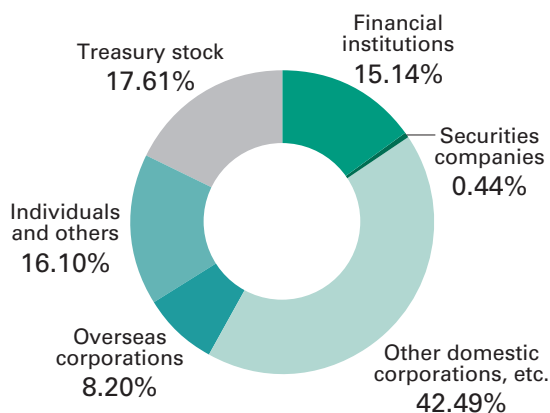
Number of Shares

Authorized 270,000,000
Outstanding 123,072,776

Number of Shareholders

15,142

Shareholder Composition



Stock Code

6581

Listed Exchanges

Tokyo (First section), Osaka (First section)

Closing of Accounts

March

General Shareholders' Meeting

Every June

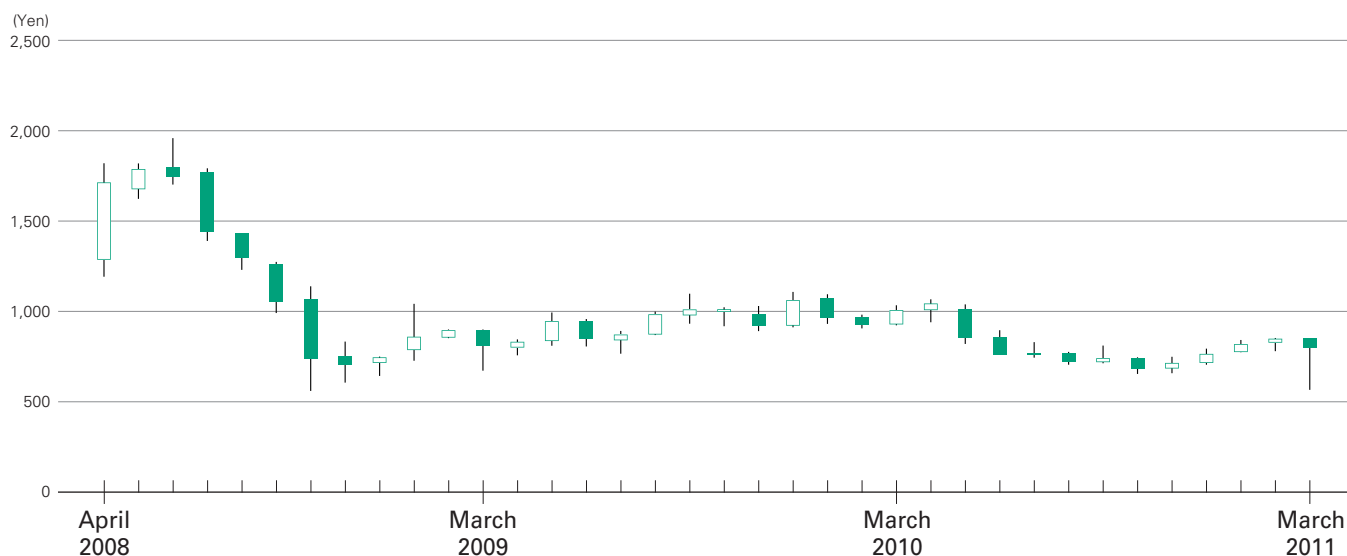
Major Shareholders

Percentage of Total Shares Issued

1. Hitachi, Ltd.	33.12%
2. Chuo Shoji, Ltd.	8.99
3. Japan Trustee Services Bank, Ltd.	4.88
4. The Master Trust Bank of Japan, Ltd.	3.45
5. Northern Trust Co. (AVFC)	1.52
6. Trust & Custody Services Bank, Ltd.	1.46
7. Nippon Life Insurance Company	1.13
8. The Bank of New York, Inc.	1.10
9. State Street Bank and Trust Company	1.10
10. The Bank of Tokyo-Mitsubishi UFJ, Ltd.	0.99

Note: In addition to the above, the Company held 21,667,430 shares (17.61%) in treasury stock.

Stock Price Range (Tokyo Stock Exchange)



For further information, please contact:

Public Relations Office, Administration Division, Hitachi Koki Co., Ltd.

Fax: 81-3-5783-0709

e-mail: ir@hitachi-koki.co.jp

Web site: <http://www.hitachi-koki.com>